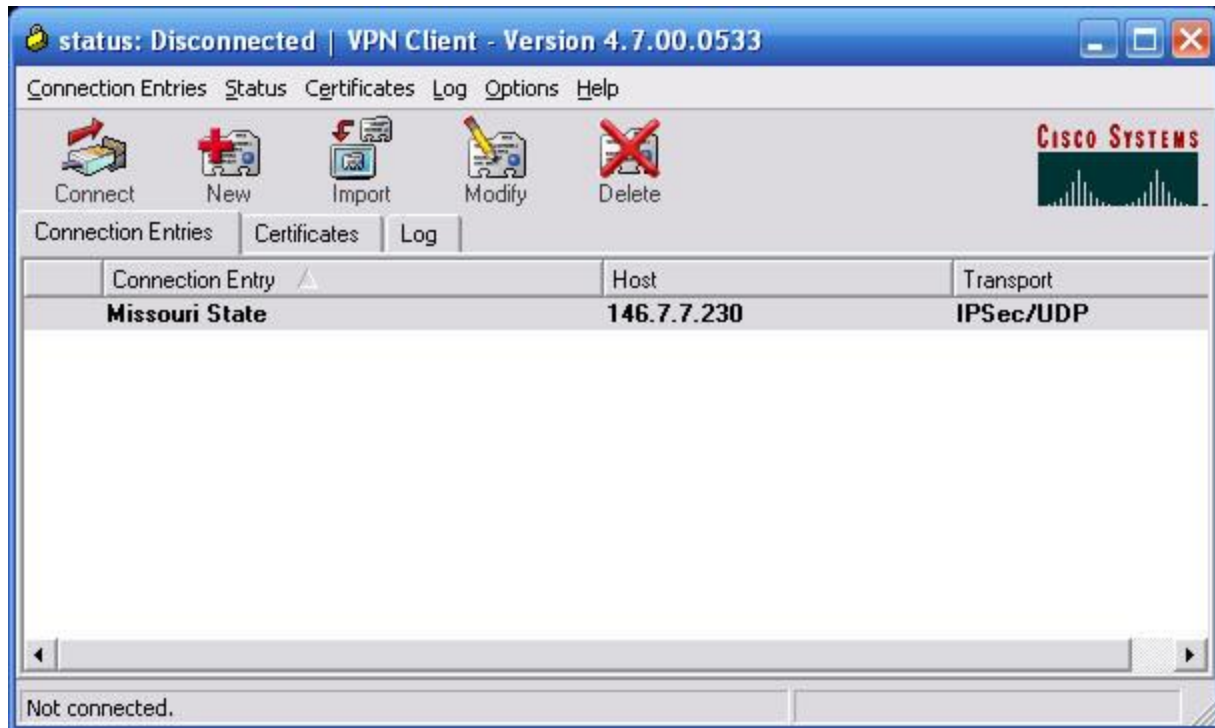


Connecting to Campus Resources with VPN

First, open the Cisco VPN Dialer by double-clicking Start, All Programs, Cisco Systems VPN Client, VPN Client.



Click on the Connect icon.



At the User Authentication window, type your domain\PrivateID and password.

Once the VPN Client establishes a connection, the window will minimize and run from the System Tray near the clock. The icon will appear as a yellow padlock. When you're finished using your connection, double-click the Cisco VPN Dialer icon in the System Tray and click on the Disconnect icon. Then close the window.

Accessing Network Folders

With a secure connection using the Cisco VPN Dialer established, you can access network folders from off campus. As an example, to connect to your home folder on the Bear1 server you would do the following:

Establish a Cisco VPN Dialer connection.

Click on Start, Run.



At the Run window, type [\\Bear1.missouristate.edu](https://bear1.missouristate.edu) as shown above.

Click "OK".

Log in with your domain\PrivateID.

Enter your password.

Click "OK".