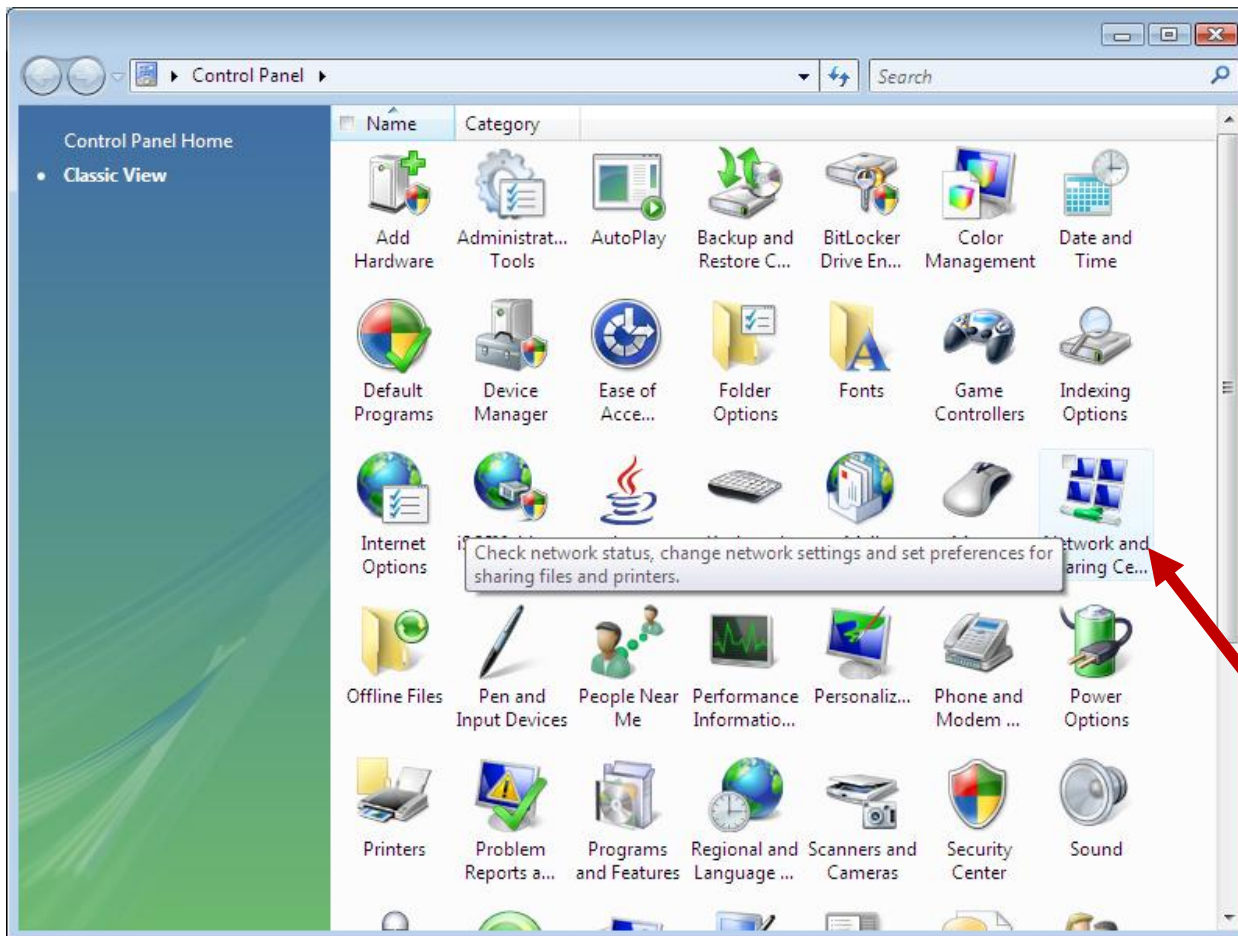


# Microsoft Vista Dialup Instructions

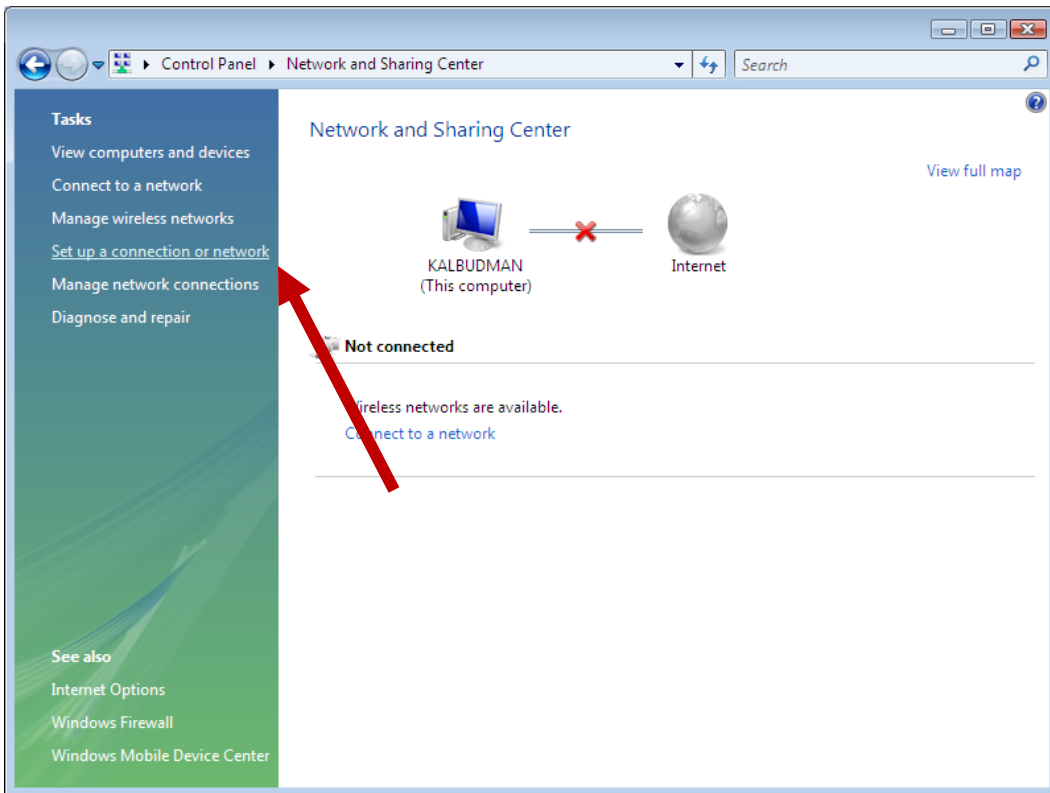
Click on the Start button in the lower left corner of your screen.

Now go to Control Panel

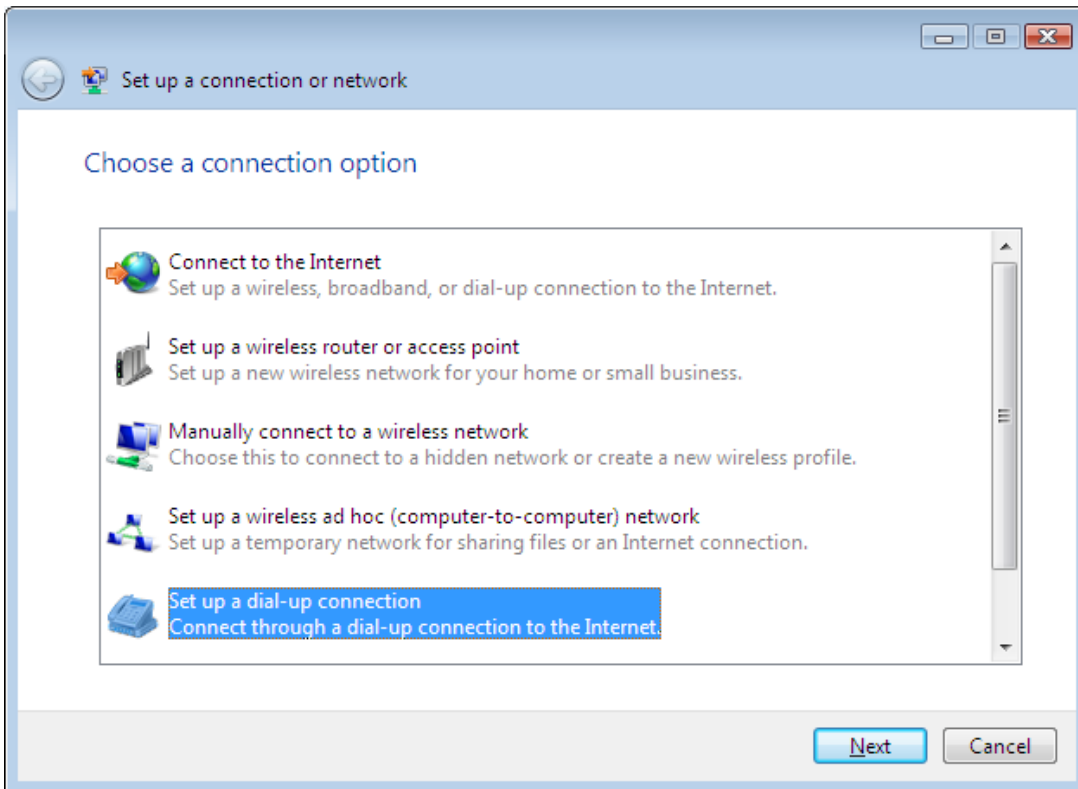
When the Control Panel appears, if it doesn't look the picture below, click on "Classic View" in the left column.



Now click on the "Network and Sharing Center" icon.



Now click on “Setup a connection or network” in the left column



Now Click “Setup a dial-up connection.”

Set up a dial-up connection

Type the information from your Internet service provider (ISP)

Dial-up phone number: 521-1234 [Dialing Rules](#)

User name: abc1

Password: ●●●●●●●●  
 Show characters  
 Remember this password

Connection name: Dial-up Connection

Allow other people to use this connection  
This option allows anyone with access to this computer to use this connection.

[I don't have an ISP](#)

Finally, enter the Springfield Campus dialup number (521-1234) or (522-2345)

Your User Name will be your Private ID

Then enter your Password

Click "Remember this password" if you plan to use this regularly.

"Connection name" can be set to whatever you would like to call it (e.g. MSU or Missouri State, etc.)

You can also click "Allow other people to use this connection" if you have others that use your computer and would benefit from this connection.