

Macintosh OS X Dialup Instructions

These instructions require a computer with a Macintosh[®] operating system of 10.0 or above, a modem, and a telephone line. There is more than one version of OS X, the examples shown may appear slightly different on your computer. Missouri State Computer Services recommends that you have at least a 14,400 baud modem. You will need to know which port your computer's modem uses.

Log-in

If applicable, log in as user with administrative rights. By default, the username and password created during the initial MacOS X setup (either after a clean install or when the computer is turned on the first time) as an administrator. If the system was setup to automatically log in, then you may already be logged in as administrator. Ask the person who setup your computer for details if you are unsure.

Configure OT/PPP

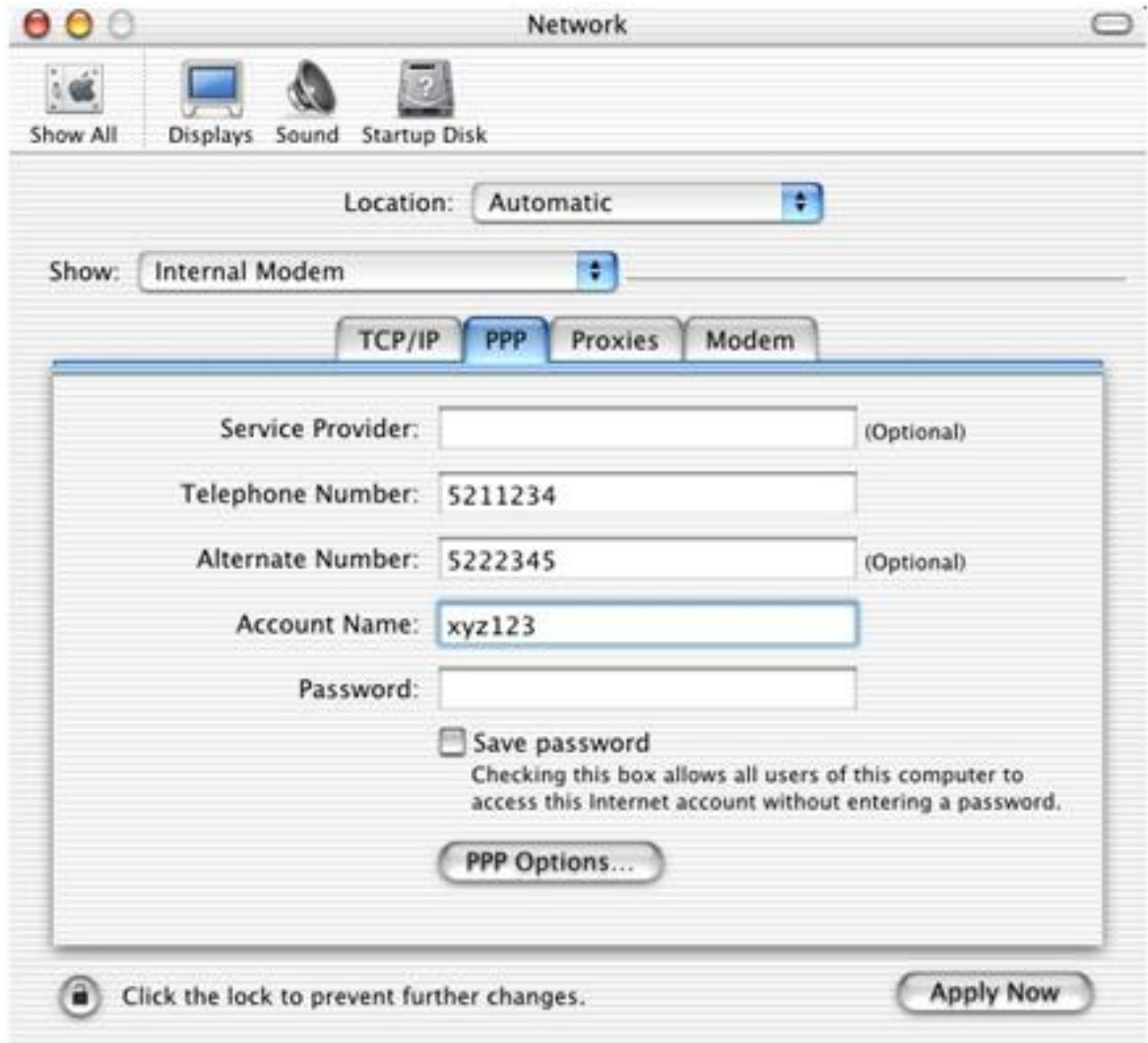
You must set up OT/PPP to connect to Missouri State. Follow these steps to configure the software on your Macintosh[®].

Note: If PPP is listed, you already have OT/PPP installed and can continue with these instructions. If the *PPP* control panel is not listed, you must install OT/PPP to continue.

1. Click **Go**, then select **Applications**. In the *Applications* window double-click **System Preferences**. The *Systems Preferences* window opens, double-click **Network**.



2. Click on the PPP tab. In the **Account Name** field, type your Missouri State SGF or WP Private ID, for example, *abc123*.



3. In the **Password** field, type your Missouri State SGF or WP password. It is not advisable to enter your password in this dialog box. The network will require you to change your password every 120 days. If the dial-up settings try to connect five times with an incorrect password, your account will be locked. If your account becomes locked, visit a lab assistant in Cheek 150, Glass 229 or Strong 107.

4. In the **Number** field, type **521-1234 (Springfield)**, **225-0655 (West Plains)**, or **926-3564 (Mountain Grove)**. If you are on campus, type **9**, before the phone number.

Note: If you use a phone number outside your local calling area, you will be charged long-distance fees by your phone company.

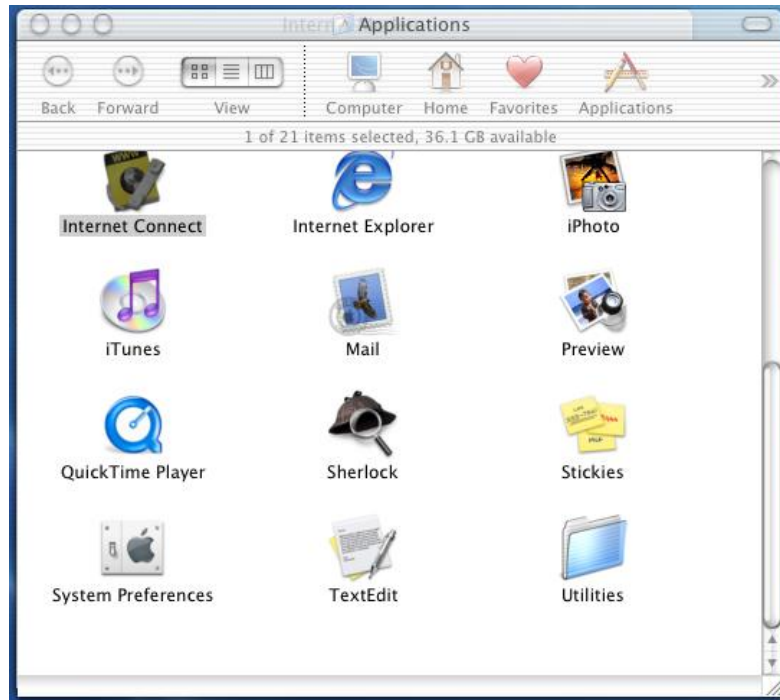
5. Click the **PPP Options** tab.
The *Network* window appears.

6. If you would like your computer to redial Missouri State when it receives a busy tone, select the **Redial if busy** option.

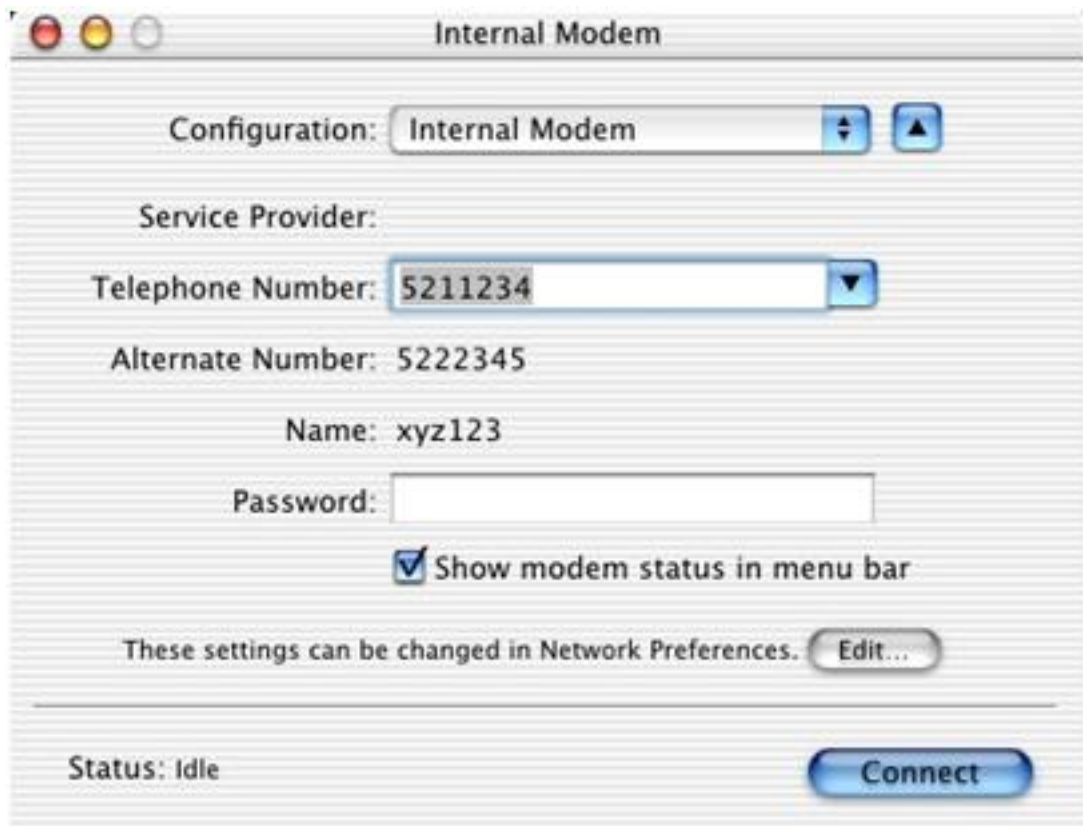
7. In the Applications folder, Click the **Internet Connect** icon. For easy access, drag it and drop the icon to the dock or desktop.



Internet Connect



8. If you checkmark the option Show modem status in menu bar, an icon of a phone will appear near the right hand side of the menu bar. This icon will also provide an easy way to use dial-up.



You have successfully configured OT/PPP. Continue to *Connect to Missouri State & Further Steps*

Connect to Missouri State

Now that you have configured your dialup connection, you can connect to Missouri State. First, if you have an external modem, make sure it is correctly connected to your computer, and turned on.

1. From the **Go** menu, click **Applications**, and then double-click **Internet Connect**. The *Internal Modem* control panel opens.
2. Enter your Missouri State SGF password into the Password field.
3. Click **Connect**
The modem begins establishing a connection, then the Connect button changes to a **Disconnect** button.

Note: If the web browser returns an error that the server could not be found after the computer finishes dialing up, press the refresh button on the web browser's toolbar.

You have successfully connected to the Missouri State modems.

Further Steps

While you are connected to the Internet you can use web browsers to see web pages from the World Wide Web, open email programs to send and receive email, and much more.

For your next steps, look at <http://helpdesk.missouristate.edu/dialup>. It will help you install email programs and other Internet functions.

Missouri State servers have a time allotment so you can only remain on the Internet for a set time period, after which your connection will be terminated to make room for other users. If the server disconnects you can try to reconnect. Peak time is 1:00 p.m. through 12:59 a.m. Monday through Sunday for the Springfield Off-Campus and West Plains dialup modem pools only. You are allowed a total of 75 peak hours a month. All other modem pools are currently considered "free" and usage of these pools is not counted against your peak limit.

When you no longer need to be connected to the Internet, you can disconnect your computer's dialup connection.

Disconnecting

When you are finished with your Internet connection, you should disconnect your computer from Missouri State. Follow these steps:

1. Click the **Internet Connect** icon on the dock or desktop.

The *Internal Modem* window appears.

2. Click the **Disconnect** button at the bottom of the dialog box or if you are using the phone icon in the menu bar, select **Disconnect**.

The modem disconnects from Missouri State.